

Q63

Integral HP Worm Speed Reducer

0.25 - 2HP, 1000 - 1230 in-lbs, 18.6 - 250RPM

- Precision machined single-piece aluminum housing combines light weight with long product life
- Interchangeability with most global manufacturers



TECHNICAL DATA

Q63								
Output Speed (RPM)	Ratio	Motor Power (HP)	Output Torque (in-lbs)	Service Factor	OHL	Nom. Torque (in-lbs)	Reducer Part Number*	Gearmotor Part Number*
250	7	2	419	2.5	385	1053	RQ63-0007-HSB2S-X	GQ63-0007-HSB2S-XAG3B
		1	209	5			GQ63-0007-HSB2S-XAE3B	
175	10	2	583	1.9	404	1133	RQ63-0010-HSB2S-X	GQ63-0010-HSB2S-XAG3B
		1	292	3.9			GQ63-0010-HSB2S-XAE3B	
116.7	15	2	854	1.4	450	1159	RQ63-0015-HSB2S-X	GQ63-0015-HSB2S-XAG3B
		1	427	2.7			GQ63-0015-HSB2S-XAE3B	
92.1	19	2	1068	1.1	517	1159	RQ63-0019-HSB2S-X	GQ63-0019-HSB2S-XAG3B
		1	534	2.2			GQ63-0019-HSB2S-XAE3B	
72.9	24	1.5	972	1.2	562	1195	RQ63-0024-HSB2S-X	GQ63-0024-HSB2S-XAF3B
		1	648	1.8			GQ63-0024-HSB2S-XAE3B	
58.3	30	1.5	1199	1	562	1230	RQ63-0030-HSB2S-X	GQ63-0030-HSB2S-XAF3B
		1	800	1.5			GQ63-0030-HSB2S-XAE3B	
38.9	45	1	1070	1.1	674	1142	RQ63-0045-HSB2S-X	GQ63-0045-HSB2S-XAE3B
		0.5	535	2.1			GQ63-0045-HSB2S-WAC3B	
26.1	67	0.5	724	1.4	674	1044	RQ63-0067-HSB2S-W	GQ63-0067-HSB2S-WAC3B
		0.25	362	2.9			GQ63-0067-HSB2S-WAA3B	
21.9	80	0.5	821	1.2	854	1000	RQ63-0080-HSB2S-W	GQ63-0080-HSB2S-WAC3B
		0.25	411	2.4			GQ63-0080-HSB2S-WAA3B	
18.6	94	0.5	880	1.1	854	1000	RQ63-0094-HSB2S-W	GQ63-0094-HSB2S-WAC3B
		0.25	440	2.3			GQ63-0094-HSB2S-WAA3B	

Notes: All units shown are standard configuration. Input motor, output shaft and mounting options are available.

Motor Specification:
230/460 VAC 60/50Hz,
3PH 1800 RPM
Nom. - inverter duty

*NEMA Input Sizes:

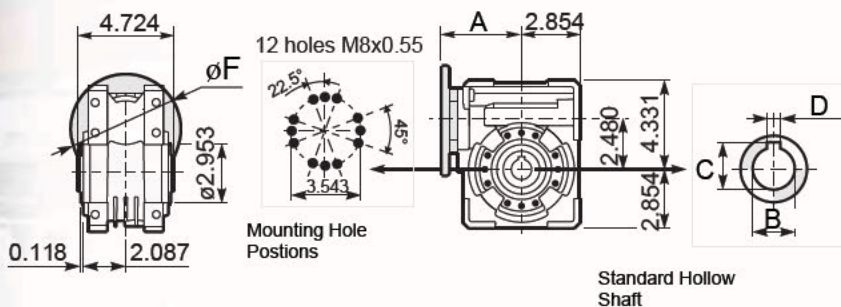
W = 56C
X = 143/5TC
Y = 182/4TC

Motors 1HP and greater meet EISA efficiency requirements.



DRAWINGS

Basic Gearbox

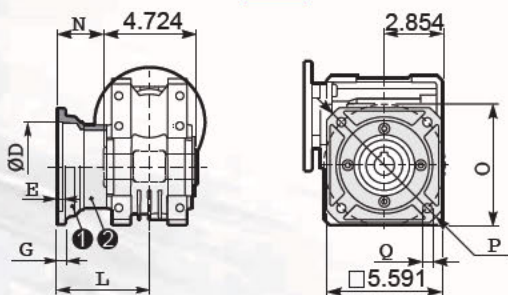


Q63	Nema Flanges	ϕF	A
	56C - 143/5TC	6 5"	4.291"
	IEC Flanges	ϕF (mm)	A (mm)
All Ratios	80 B5	200	99.5
7:1 to 30:1	90 B5	200	99.5
All Ratios	80 B14	120	99.5
7:1 to 30:1	90 B14	140	99.5

Hollow Shaft	B	C	D
Imperial	1.125"	1.245"	0.25"
Metric (mm)	25	28.3	8

Square Flange

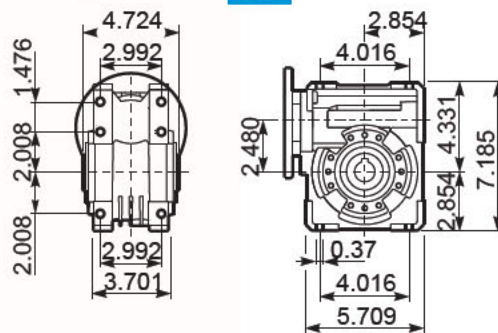
F2



type B	ϕD	E	G	L	N	O	P	Q
F2	4.5354 4.5335	0.24	0.47	3.386	1.024	5.906	7.087	0.43

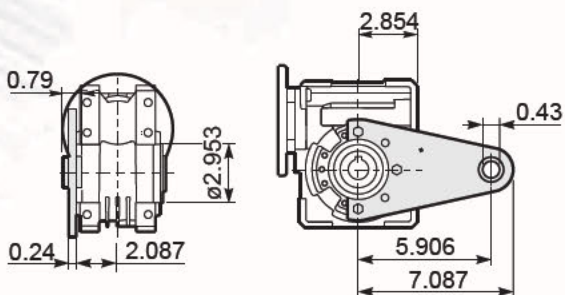
Mounting

SB



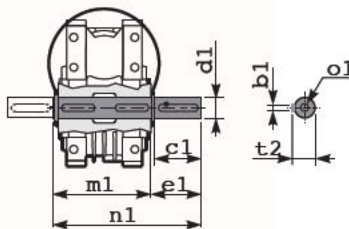
Torque Arm

TA



Output Shaft Insert

R/L



	b1	c1	d1	e1	m1	n1	t2	o1
Standard	0.25	2.240	1.125	2.437	4.992	7.429	1.23	5/16-18

Gearbox Weight **13.2** pounds